



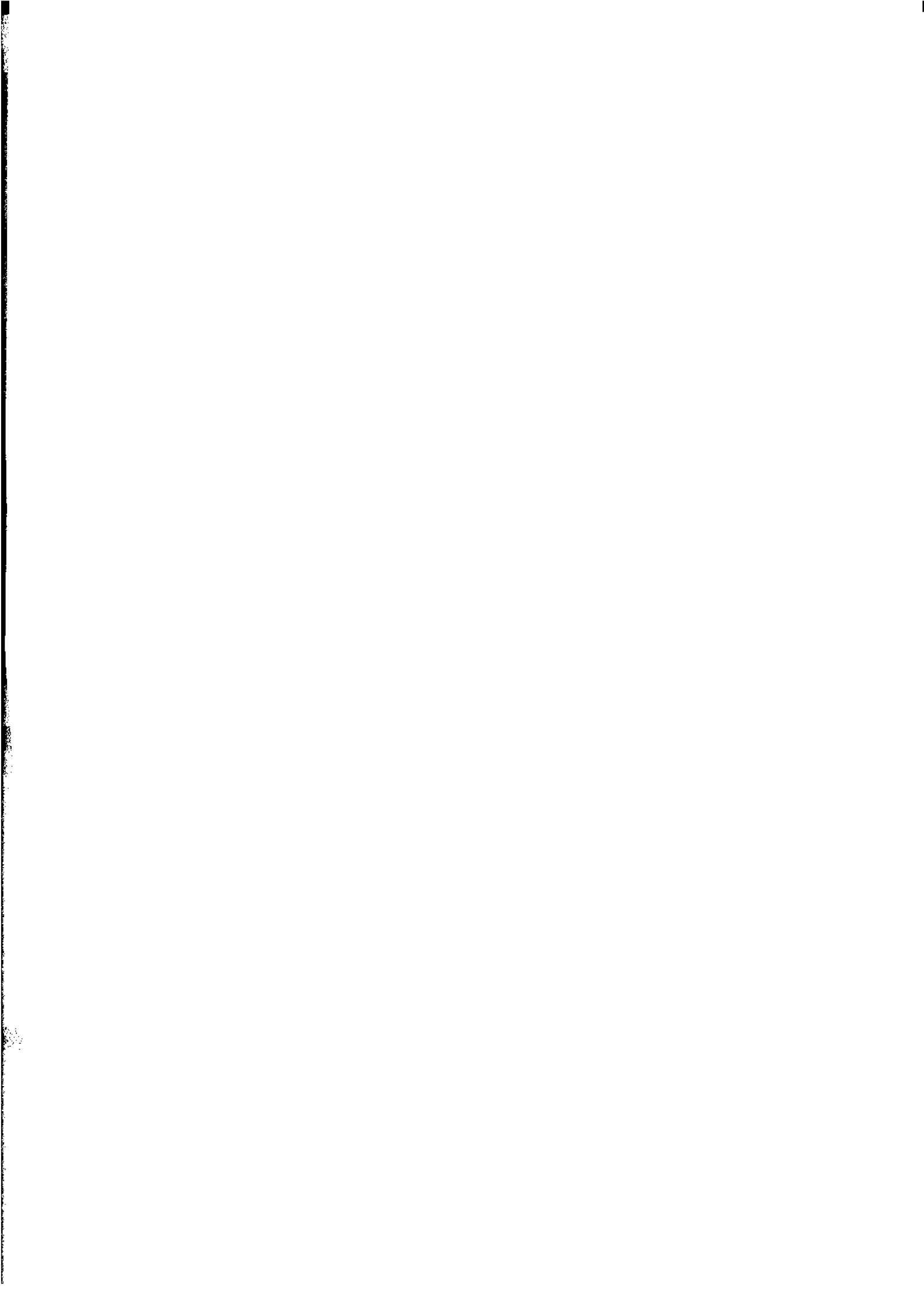
November 1996

EMBARGOED UNTIL 11:30 AM FRI 8 NOVEMBER 1996

# Tasmanian Statistical Indicators

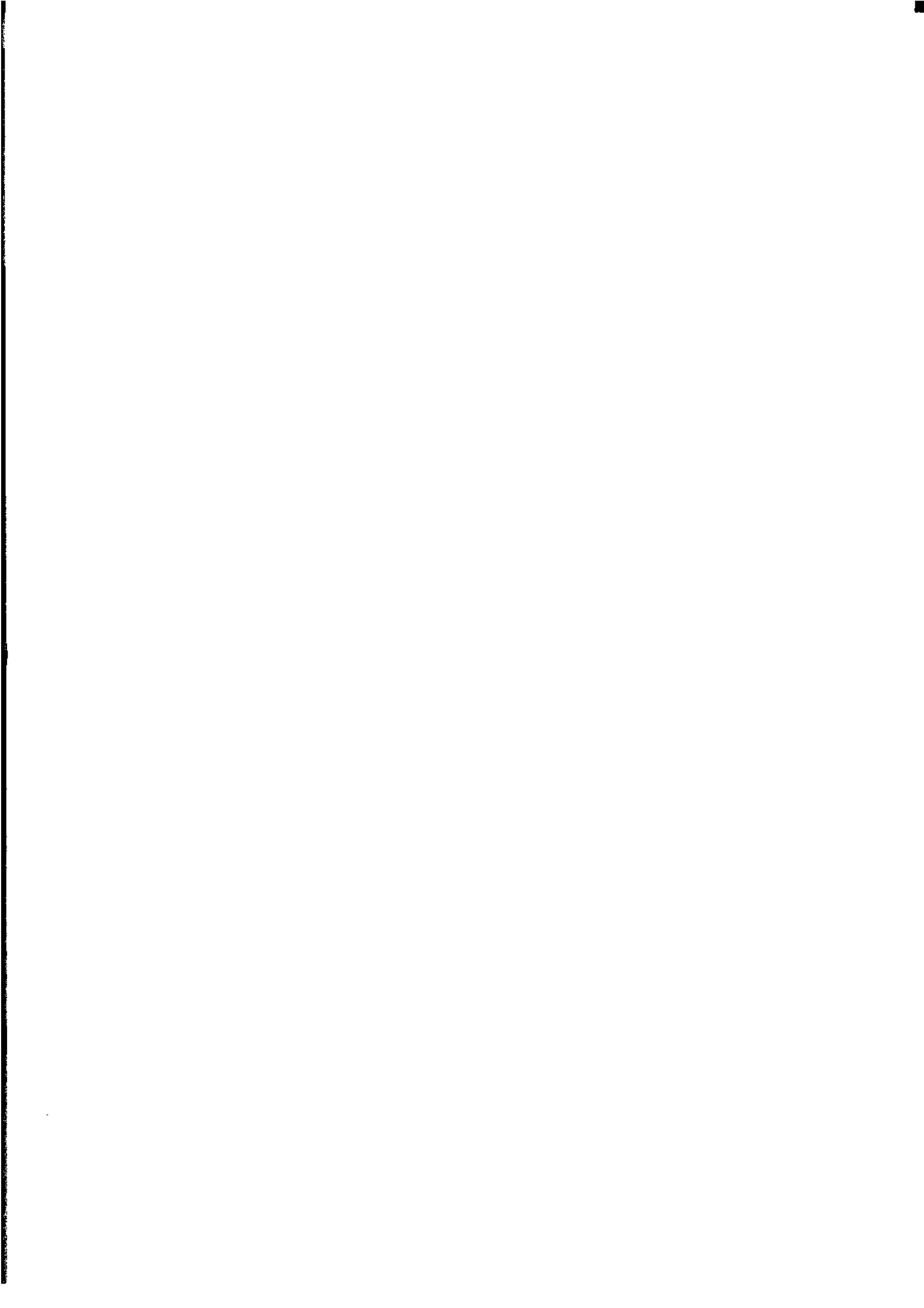
Statistics

ABS Catalogue No. 1303.6



**TASMANIAN STATISTICAL INDICATORS  
NOVEMBER 1996**

**Denis W. Rogers  
Regional Director, Tasmania**



## CONTENTS

	Page
MAIN FEATURES	v
TABLES	
<b>1</b> Population	1
<b>2</b> Births, deaths and marriages registered	1
<b>3</b> Labour force status	2
<b>4</b> Labour force status by region, males	3
<b>5</b> Labour force status by region, females	4
<b>6</b> Labour force status by region, persons	5
<b>7</b> Teenage labour market	6
<b>8</b> All employed persons by occupation	7
<b>9</b> Employed wage and salary earners, sector and industry	8
<b>10</b> Average hours worked	8
<b>11</b> Job vacancies	9
<b>12</b> Industrial disputes	9
<b>13</b> Average weekly earnings of employees	10
<b>14</b> Weekly award rates of pay indexes, full-time adult employees	10
<b>15</b> Summary of annual movements in wages and prices	11
<b>16</b> House price index numbers, Hobart	11
<b>17</b> Consumer price index, Hobart and eight capital cities combined	12
<b>18</b> Price index of materials used in building other than house building, Hobart	13, 14
<b>19</b> Production of selected commodities	15
<b>20</b> Livestock slaughtering: original	16
<b>21</b> Livestock slaughtering: seasonally adjusted and trend	16
<b>22</b> Meat production	17
<b>23</b> Principal mineral concentrates produced	17
<b>24</b> Sawmills and plywood mills, logs delivered and timber produced	18
<b>25</b> Chipping and grinding of wood	18
<b>26</b> Logs delivered for milling or chipping	19
<b>27</b> Building approvals	20

---

### INQUIRIES

- *for further information about statistics in this publication and the availability of related unpublished statistics, contact the Hobart office of the ABS on (03) 6220 5800.*
  - *for information about other ABS statistics and services, please refer to the back cover of this publication.*
-

	Page
<b>28</b> Dwelling commencements	20
<b>29</b> Banking statistics	21
<b>30</b> Private new capital expenditure by type of asset	21
<b>31</b> Passenger arrivals and departures, Tasmania	22
<b>32</b> Total passenger arrivals by air and sea, Tasmania	22
<b>33</b> Accommodation statistics	23
<b>34</b> Registrations of new motor vehicles	24
<b>35</b> Turnover of retail establishments at current prices	24
<b>36</b> Major Statistical Indicators—Australia and State comparisons	25
 EXPLANATORY NOTES	 26

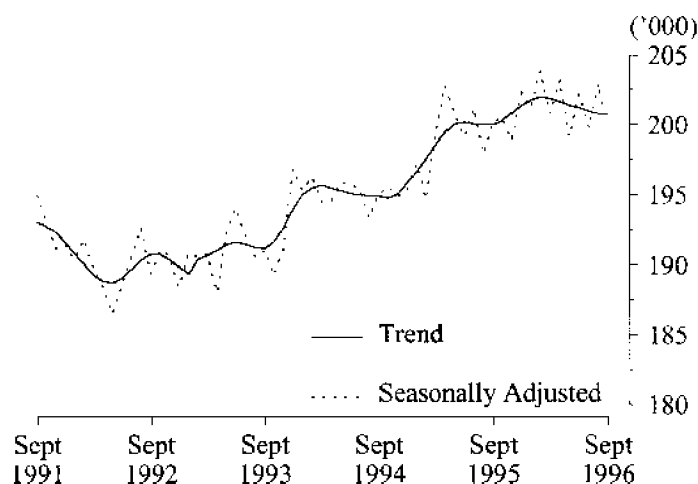
## MAIN FEATURES

### EMPLOYMENT

State comparisons trend estimates

The Australian and State *trend* series comparisons are given on page 25. There was an increase of 0.4 % in Tasmania's employment over the year to September 1996. The largest increase in employment was in Queensland (2.2 %). Next followed Western Australia (2.1 %), Victoria (1.3 %), South Australia (0.4 %), and New South Wales (0.3 %). (See table 36, page 25.)

### EMPLOYMENT, TASMANIA



Regional comparisons original terms

In the Hobart and Southern Statistical Divisions the estimate of employment in *original terms* in September 1996 was 100,100 compared with 101,600 in September 1995. The estimate of employment in the Northern Statistical Division in September 1996 was 58,700 compared with 56,900 in September 1995. The estimate of employment in the Mersey-Lyell Statistical Division was 41,300 in September 1996, compared with 42,700 for September 1995. (See tables 3-8, pages 2-7.)

### THE LABOUR FORCE

Trend estimates

There were an estimated 224,600 persons (based on *trend* estimates) in the labour force in September 1996, and an estimated 369,000 civilian Tasmanians aged 15 or more, yielding a labour force participation rate of 60.9%, compared with 60.1% in September 1995.

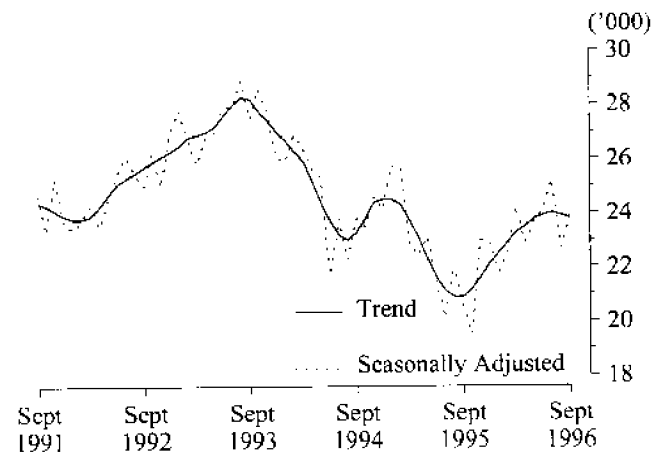
For males, the *trend* estimate of the participation rate was 72.0%, compared with 69.8% for September 1995. For females, the *trend* estimate of the participation rate was 50.1%, compared with 50.7% in September 1995.

(See table 3, page 2.)

## UNEMPLOYMENT

Trend estimates The Tasmanian *trend* estimate of 23,800 unemployed persons in September 1996 was an increase of 2,900 on the figure for September 1995 of 20,900. The *trend* estimate of the unemployment rate of 10.6% in September 1996 compared with 9.5% in September 1995. (See table 3, page 2.)

### UNEMPLOYMENT, TASMANIA



## EMPLOYED WAGE AND SALARY EARNERS

Original terms In *original* terms, there were approximately 137,600 employed wage and salary earners in Tasmania in March 1995. In March 1993 the figure was 147,100 employed wage and salary earners.

In *original* terms, the Tasmanian public sector accounted for 31.7% of all employed wage and salary earners in February 1995. Overall, the category Community services had the highest industry representation — 27.8% — compared with the equivalent figure of 24.9% recorded in February 1993. The next highest industry grouping was Wholesale and retail trade (19.4%, compared with 20.8% in February 1993) and Manufacturing (15.2%, compared with 14.8% in February 1993).

In *original* terms, women made up 45.5% of employed wage and salary earners in February 1995. In February 1993, the equivalent figure was 44.8%.

Source: *Employed Wage and Salary Earners, Australia*, ABS catalogue no. 6248.0.

## AWARD RATES OF PAY INDEXES

Original terms The annual movement from August 1995 to August 1996 of weekly award rates of pay indexes for Tasmania was 0.5% for full-time adult females and 1.0% for full-time adult males, for a combined annual increase of 0.9%. For Australia, the figures were 1.4% for females and 1.1% for males, for a combined annual increase of 1.2%.



For full-time adult female employees in Tasmania, the largest industry increases over this 12 month period occurred in the Public administration and defence industry (1.8%); and the Manufacturing industry (1.4%).

For the same period for full-time adult male employees in Tasmania, the largest industry increases occurred in the Transport and storage industry (3.1%); and the Manufacturing industry (1.7%).

The largest occupation increase over the same period for full-time adult female employees occurred in Tradespersons (1.6%); and Plant and machine operators, and drivers (1.1%).

For full-time adult male employees the largest occupation increases over the period occurred in Plant and machine operators, and drivers (2.1%); and Clerks (1.1 per cent).

Source: *Award Rates of Pay Indexes, Australia*, catalogue no. 6312.0.

## BUILDING MATERIALS PRICE INDEXES

Original terms The price index for house building materials in Hobart decreased by 0.1% for the month of August 1996. The price index for house building materials in Hobart decreased by 0.2% for the twelve months ending August 1996, compared with increases of 4.6% for the twelve months ending August 1995, and 2.1% for the twelve months ending August 1993.

The price index for materials used in other than house building in Hobart rose by 0.1% for the month of August 1996. The index rose by 0.9% for the year ending August 1996, compared with increases of 3.6% for the twelve months ending August 1995, and 2.1% for the corresponding period in 1993.

Building components prices which registered the highest change in Hobart over the year to August were paint and other coatings (up 5.5%) and clay bricks and structural steel (up 5.4%). A fall of 8.9% was recorded in the price index for non-ferrous pipes and fittings for the year to August 1996, and prices for structural timber fell by 7.6% over the same period.

*(See tables 15 and 18, pages 11 and 13.)*

## CONSUMER PRICE INDEX

Original terms The consumer price index: all groups for Hobart rose by 0.4% in the September quarter 1996, and by 2.3% for the year ending September. The all groups index for the weighted average of the eight capital cities rose by 0.3% for the September quarter, bringing it to 2.1% for the year ending September.

Quarterly increases recorded in other State capitals were 0.3% in Sydney, 0.3% in Melbourne, 0.2% in Brisbane, 0.2% in Adelaide, 0.3% in Perth, 0.7% in Darwin, and 0.0% in Canberra.

The highest annual increase was recorded in Darwin (3.1%), and the lowest (1.7%) in both Melbourne and Adelaide.

Major contributors to the annual change at the national level were cigarette and tobacco prices (up 8.4%), hospital and medical services (up 5.0%), privately-owned dwelling rents (up 3.3%) and vehicle insurance (up 6.2%). Offsetting falls occurred in the prices of motor vehicles (down 2.0%), local government rates and charges (down 3.8%), fresh potatoes (down 24.4%) and fresh vegetables (down 8.0%).

The underlying rate of inflation, as defined by the Commonwealth Treasury, increased by 0.5% for the September quarter 1996, and 2.4% for the year ending September.  
(See table 17, page 12.)

## LIVESTOCK SLAUGHTERING

Trend estimates The August 1996 Tasmanian *trend* estimate for the slaughtering of cattle and calves was 1.2% higher than that recorded in the previous month. The number of sheep and lambs slaughtered decreased by 2.1%, and the number of pigs slaughtered decreased by 0.8% over the same period.

The *trend* estimate of the number of cattle and calves slaughtered was 20,257 which is 3.6% above the 19,547 slaughtered in August 1995.

The *trend* estimate for the slaughtering of sheep and lambs was 59,735 in August 1996, 12.5% below the 68,271 slaughtered in August 1995. This was the eighth successive decline in the number of sheep and lambs slaughtered in Tasmania, and well below the estimate of 99,994 slaughtered in August 1994.

The *trend* estimate of 6,298 pigs slaughtered in August 1996 was 11.9% below the 7,151 slaughtered in August 1995. This was the eighth successive month of decline in the number of pigs slaughtered in Tasmania.

(See table 21, page 16.)

## BUILDING APPROVALS

Original terms There were 176 new dwelling units approved during August 1996 in Tasmania. This was an increase of 45.5% on the 121 recorded for July 1996 but a 20.4% decrease on the number recorded for August 1995 (221).

For the twelve months ended August 1996 there were 2,402 new dwelling units approved, 20.1% below the 3,006 units recorded for the twelve months ended August 1995.

The value of residential building approved, at current prices, in August 1996 was \$18.1 million, 53.2% above the July 1996 figure of \$11.8 million, but 10.5% below the August 1995 figure of \$20.2 million.

The value of non residential building approved, at current prices, in August 1996 was \$17.5 million, 54.2% below the July 1996 figure of \$38.2 million and 26.5% below the August 1995 figure of \$23.8 million.  
(See table 27, page 20.)

## HOUSING FINANCE

Trend Estimates The *trend* estimate for the number of new secured housing finance commitments entered into in Tasmania in August 1996 was 1,037 dwellings, an increase of 6.4% on the July 1996 total of 975 dwellings. The value of the August 1996 commitments was \$69.4 million up 5.2% on the July 1996 figure of \$66.0 million.

During the twelve months ended August 1996 the *trend* estimate for the number of dwelling commitments increased 2.7% from 1,010 to 1,037 dwellings. The value of these commitments rose 0.7% from \$68.9 million to \$69.4 million. However, Tasmania's rate of increase was below the national average. The total number of Australian dwelling commitments for the twelve months ended August 1996 increased 4.5% from 37,098 to 38,784 dwellings, and the value of these commitments increased 8.1% from \$3,560.2 million to \$3,849.3 million.

Source: *Housing Finance for Owner Occupation*, August 1996, ABS catalogue no. 5609.0.

## NEW MOTOR VEHICLE REGISTRATIONS

Original terms There were 1,336 new motor vehicles (excluding motorcycles) registered in Tasmania during August 1996. This was marginally lower than the 1,341 registered in July 1996 but 5.3% above the figure for August 1995 (1,269).

There were 52 new motorcycles registered in August 1996, the highest monthly figure recorded since March 1995.

(See table 34, page 24.)

## RETAIL

Original terms In *original* terms, the estimate of retail turnover in August 1996, for Australia was \$10,113.1 million, 5.3% above the \$9,604.9 million recorded in August 1995.

In *original* terms, the estimate of retail turnover in August 1996, for Tasmania, was \$243.2 million, 5.5% above the figure recorded for August 1995 (\$230.5 million).

Trend estimates The *trend* estimate of turnover for August 1996, for Australia (\$10,364.9 million), was 5.2% higher than for August 1995 (\$9,852.3 million).

The monthly *trend* estimate for turnover of retail and selected service establishments for Tasmania has continued to increase over the past twelve months.

The *trend* estimate recorded for August 1996, was \$2,48.4 million, an increase of 4.8% on the August 1995 figure of \$237.0 million.  
(See table 35, page 24.)



# 1

## POPULATION: Original

Year or quarter	Estimated resident population at end of period	Natural increase <sup>1</sup>	Net estimated migration gain	Total population growth	Annual growth rate <sup>2</sup>
	'000	'000	'000	'000	%
<b>Year ended 30 June</b>					
1992	469.7	3.2	- 0.3	2.9	0.62
1993	471.4	3.1	- 1.5	1.7	0.35
1994	472.5	3.1	- 2.0	1.1	0.24
1995	473.0	2.9	- 2.4	0.5	0.11
<b>Quarter</b>					
<b>1994</b>					
December	472.8	0.8	- 0.8	0.0	0.14
<b>1995</b>					
March	473.0	0.8	- 0.6	0.2	0.17
June	473.0	0.7	- 0.7	0.0	0.11
September p	473.2	0.7	- 0.5	0.2	0.09
December p	473.2	0.5	- 0.6	0.1	0.07
<b>1996</b>					
March p	473.2	0.8	- 0.7	0.1	0.04

<sup>1</sup> Excess of live births registered over deaths registered (based on usual State of residence).

<sup>2</sup> Percentage growth from same quarter in previous year.

(Source: Australian Demographic Statistics, ABS catalogue number 3101.0)

# 2

## BIRTHS, DEATHS AND MARRIAGES REGISTERED: Original

Year or quarter	Births		Deaths		Infant mortality <sup>1</sup>		Marriages	
	No.	Rate <sup>2</sup>	No.	Rate <sup>2</sup>	Deaths	Rate <sup>3</sup>	No.	Rate <sup>2</sup>
<b>Year ended 31 December</b>								
1991	6 857	14.7	3 664	7.9	61	8.9	3 069	6.6
1992	6 956	14.8	3 722	7.9	43	6.2	3 081	6.6
1993	6 804	14.4	3 618	7.7	37	5.4	3 055	6.5
1994	6 836	14.5	3 909	8.3	46	6.7	2 887	6.1
1995 p	6 558	13.9	3 739	7.9	36	5.5	2 840	6.0
<b>Quarter</b>								
<b>1994</b>								
December	1 702	..	883	..	9	5.3	768	..
<b>1995</b>								
March p	1 804	..	897	..	8	4.4	1 067	..
June p	1 611	..	954	..	10	6.2	667	..
September p	1 697	..	982	..	9	5.3	307	..
December p	1 446	..	906	..	9	6.2	799	..
<b>1996</b>								
March p	1 748	..	979	..	10	5.7	856	..

<sup>1</sup> Registered deaths of children under one year of age.

<sup>2</sup> Rate per 1,000 of estimated mean population.

<sup>3</sup> Rate per 1,000 live births.

(Source: Australian Demographic Statistics, ABS catalogue number 3101.0)

## 3

LABOUR FORCE STATUS<sup>1</sup>: Seasonally adjusted and trend

Month	Seasonally adjusted series				Trend Series			
	Employed	Unemployed	Unemployment rate	Participation rate	Employed	Unemployed	Unemployment rate	Participation rate
	'000	'000	%	%	'000	'000	%	%
<b>MALES</b>								
<b>1995</b>								
September	112.9	13.4	10.6	69.9	112.9	13.2	10.5	69.8
October	113.2	11.7	9.3	69.1	113.0	13.2	10.5	69.9
November	112.8	13.6	10.8	70.0	113.5	13.4	10.6	70.2
December	113.8	14.7	11.4	71.0	114.1	13.8	10.8	70.7
<b>1996</b>								
January	114.7	14.0	10.9	71.1	114.9	14.1	11.0	71.3
February	117.0	14.0	10.7	72.4	115.4	14.5	11.2	71.8
March	115.5	15.0	11.5	72.1	115.7	14.9	11.4	72.1
April	116.3	15.3	11.6	72.6	115.8	15.0	11.5	72.2
May	114.5	15.0	11.6	71.5	115.7	15.1	11.5	72.2
June	116.2	15.2	11.6	72.5	115.7	15.0	11.5	72.2
July	114.9	15.5	11.9	71.9	115.8	14.9	11.4	72.1
August	117.5	13.7	10.5	72.4	115.9	14.7	11.2	72.0
September	115.6	14.4	11.1	71.7	116.1	14.4	11.1	72.0
<b>FEMALES</b>								
<b>1995</b>								
September	87.5	7.1	7.5	50.7	87.1	7.7	8.1	50.7
October	87.9	7.9	8.2	51.2	87.3	8.0	8.4	51.0
November	86.7	9.4	9.8	51.4	87.4	8.2	8.6	51.1
December	88.2	8.2	8.5	51.5	87.3	8.4	8.7	51.1
<b>1996</b>								
January	86.5	7.8	8.2	50.4	87.0	8.4	8.8	51.0
February	86.9	8.4	8.9	50.9	86.6	8.4	8.8	50.7
March	85.3	9.1	9.7	50.4	86.2	8.4	8.9	50.5
April	87.0	7.6	8.0	50.5	85.9	8.5	9.0	50.4
May	84.6	8.7	9.3	49.8	85.7	8.7	9.2	50.4
June	86.0	8.9	9.3	50.6	85.4	8.9	9.4	50.4
July	85.0	9.7	10.3	50.5	85.2	9.1	9.7	50.3
August	85.5	9.0	9.5	50.4	84.9	9.3	9.8	50.2
September	83.8	9.4	10.1	49.7	84.7	9.4	10.0	50.1
<b>TOTAL</b>								
<b>1995</b>								
September	200.4	20.5	9.3	60.1	200.0	20.9	9.5	60.1
October	201.0	19.5	8.9	60.0	200.3	21.2	9.6	60.3
November	199.6	23.0	10.3	60.5	200.9	21.6	9.7	60.5
December	201.9	22.9	10.2	61.1	201.4	22.1	9.9	60.8
<b>1996</b>								
January	201.2	21.8	9.8	60.6	201.8	22.5	10.0	61.0
February	203.9	22.5	9.9	61.5	202.0	22.9	10.2	61.1
March	200.8	24.2	10.7	61.1	201.9	23.3	10.3	61.1
April	203.2	22.9	10.1	61.4	201.7	23.5	10.4	61.1
May	199.2	23.7	10.6	60.5	201.4	23.8	10.6	61.1
June	202.2	24.1	10.6	61.4	201.2	23.9	10.6	61.1
July	199.8	25.2	11.2	61.1	201.0	24.0	10.6	61.0
August	203.0	22.7	10.0	61.2	200.8	23.9	10.6	60.9
September	199.5	23.9	10.7	60.5	200.8	23.8	10.6	60.9

<sup>1</sup> For explanation of terms and concepts, refer to *Labour Force, Australia*, ABS catalogue number 6203.0.  
(Source: *Labour Force Australia*, ABS catalogue number 6203.0)

# 4

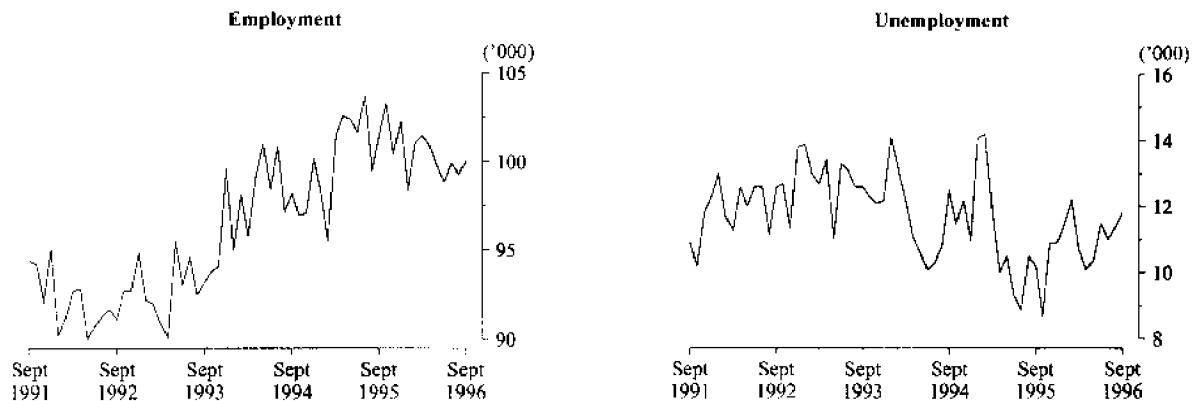
## LABOUR FORCE STATUS BY REGION, MALES<sup>1, 2</sup>: Original

Month		Total employed '000	Total unemployed '000	Unemployment rate %	Participation rate %
<b>HOBART AND SOUTHERN STATISTICAL DIVISIONS</b>					
1993	September	52.1	7.7	12.9	69.3
1995	September	56.2	7.0	11.0	72.3
1996	July	56.0	6.4	10.2	70.0
	August	55.8	7.1	11.3	70.9
	September	56.2	6.7	10.7	70.7
<b>NORTHERN STATISTICAL DIVISION</b>					
1993	September	32.8	4.5	12.1	72.2
1995	September	32.0	3.8	10.6	71.0
1996	July	33.2	5.4	13.9	74.8
	August	33.6	3.8	10.3	72.5
	September	34.5	3.9	10.2	74.5
<b>MERSEY-LYELL STATISTICAL DIVISION</b>					
1993	September	25.0	4.9	16.5	72.5
1995	September	24.3	2.7	10.0	62.9
1996	July	26.6	3.0	10.1	72.7
	August	25.8	3.1	10.7	70.7
	September	24.5	3.9	13.6	69.5
<b>TASMANIA</b>					
1993	September	109.9	17.1	13.5	70.9
1995	September	112.5	13.5	10.7	69.7
1996	July	115.7	14.7	11.3	72.0
	August	115.2	14.0	10.9	71.3
	September	115.2	14.5	11.2	71.5

<sup>1</sup> For explanation of terms and concepts, refer to *Labour Force, Australia*, ABS catalogue number 6203.0.

<sup>2</sup> Data in this table are original series, i.e. they are not part of a seasonally adjusted or a trend series. Accordingly, care should be exercised when using these data. New monthly data from each quarter (March, June, September and December) are published two months after the quarter. (Source: Labour Force Estimates—microfiche tables.)

### Hobart and Southern Statistical Divisions—Persons: Original



## 5

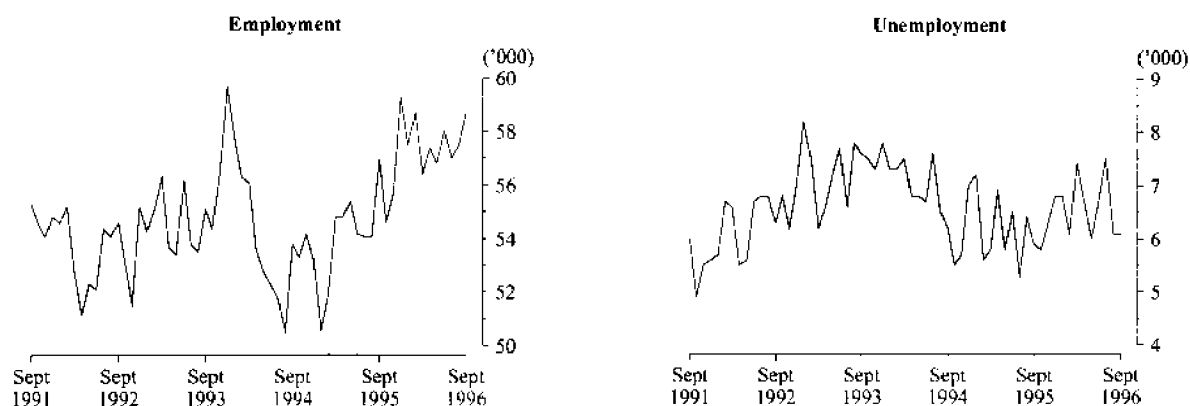
LABOUR FORCE STATUS BY REGION, FEMALES<sup>1, 2</sup>: Original

		Total employed	Total unemployed	Unemployment rate	Participation rate
Month		'000	'000	%	%
HOBART AND SOUTHERN STATISTICAL DIVISIONS					
1993	September	42.1	5.0	10.7	51.5
1995	September	45.3	3.2	6.6	52.2
1996	July	43.9	4.7	9.6	51.9
	August	43.4	4.3	9.0	50.6
	September	44.0	5.0	10.3	52.1
NORTHERN STATISTICAL DIVISION					
1993	September	22.5	3.1	12.0	48.4
1995	September	24.9	2.2	8.0	52.0
1996	July	23.8	2.2	8.4	50.2
	August	23.9	2.2	8.5	50.3
	September	24.2	2.2	8.3	50.3
MERSEY-LYELL STATISTICAL DIVISION					
1993	September	17.5	2.7	13.3	48.9
1995	September	18.4	1.7	8.2	47.9
1996	July	17.7	2.6	13.0	48.5
	August	16.7	2.1	11.1	45.7
	September	16.8	2.0	10.9	45.9
TASMANIA					
1993	September	82.0	10.8	11.6	50.0
1995	September	88.7	7.0	7.3	51.2
1996	July	85.4	9.5	10.0	50.7
	August	84.1	8.6	9.3	49.4
	September	84.9	9.3	9.8	50.2

<sup>1</sup> For explanation of terms and concepts, refer to *Labour Force, Australia*, ABS catalogue number 6203.0.

<sup>2</sup> Data in this table are original series, i.e. they are not part of a seasonally adjusted or a trend series. Accordingly, care should be exercised when using these data. New monthly data from each quarter (March, June, September and December) are published two months after the quarter. (Source: Labour Force Estimates—microfiche tables.)

## Northern Statistical Division—Persons: Original





# 6

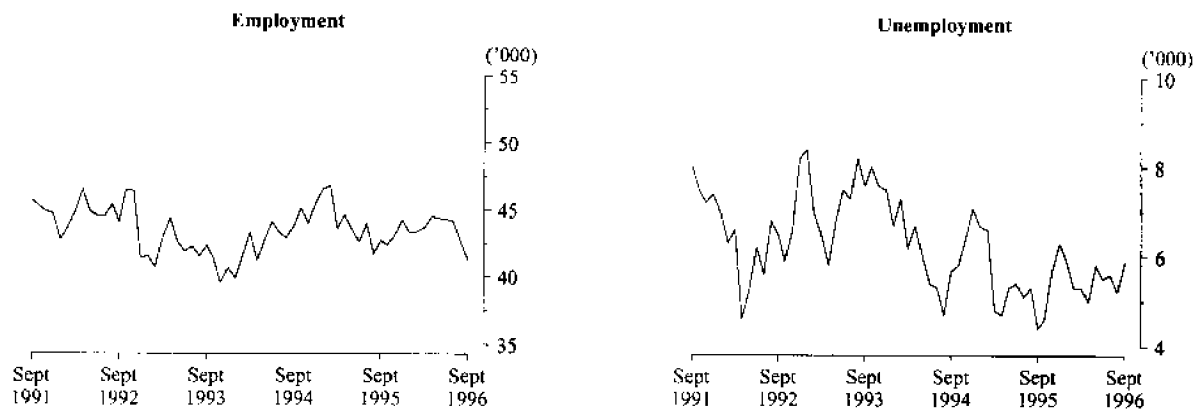
## LABOUR FORCE STATUS BY REGION, PERSONS<sup>1, 2</sup>: Original

Month		Total employed '000	Total unemployed '000	Unemployment rate %	Participation rate %
<b>HOBART AND SOUTHERN STATISTICAL DIVISIONS</b>					
1993	September	94.2	12.7	11.9	60.1
1995	September	101.6	10.2	9.1	61.9
1996	July	99.9	11.0	9.9	60.7
	August	99.3	11.4	10.3	60.4
	September	100.1	11.8	10.5	61.1
<b>NORTHERN STATISTICAL DIVISION</b>					
1993	September	55.3	7.6	12.1	60.2
1995	September	56.9	5.9	9.5	61.4
1996	July	57.0	7.5	11.7	62.5
	August	57.5	6.1	9.6	61.4
	September	58.7	6.1	9.4	62.3
<b>MERSEY-LYELL STATISTICAL DIVISION</b>					
1993	September	42.4	7.6	15.2	60.7
1995	September	42.7	4.4	9.2	55.5
1996	July	44.2	5.6	11.3	60.4
	August	42.6	5.2	10.9	58.1
	September	41.3	5.9	12.5	57.6
<b>TASMANIA</b>					
1993	September	191.9	27.9	12.7	60.3
1995	September	201.1	20.4	9.2	60.3
1996	July	201.1	24.2	10.7	61.1
	August	199.3	22.7	10.2	60.2
	September	200.1	23.8	10.6	60.7

<sup>1</sup> For explanation of terms and concepts, refer to *Labour Force, Australia*, ABS catalogue number 6203.0.

<sup>2</sup> Data in this table are original series, i.e. they are not part of a seasonally adjusted or a trend series. Accordingly, care should be exercised when using these data. New monthly data from each quarter (March, June, September and December) are published two months after the quarter. (Source: Labour Force Estimates—microfiche tables.)

### Mersey-Lyell Statistical Division—Persons: Original



## 7

TEENAGE LABOUR MARKET<sup>1, 2</sup>: Original

Month	Employed		Unemployed		Labour force	Not in labour force	Civilian population aged 15-19	Unemployment rate	Unemployment population ratio	Participation rate	
	Full-time	Total	Looking for full-time work	Total							
	'000	'000	'000	'000	'000	'000	'000	%	%	%	
ATTENDING NEITHER SCHOOL NOR A TERTIARY INSTITUTION FULL TIME											
1993	September	6.5	8.7	3.4	3.5	12.2	1.6	13.8	28.8	25.4	88.5
1995	September	6.5	8.7	2.1	2.1	10.8	1.2	12.0	19.2	17.5	89.8
1996	July	6.6	8.7	3.0	3.0	11.6	1.5	13.1	25.7	22.9	88.9
	August	6.4	8.3	1.8	2.1	10.4	1.5	11.9	19.8	17.6	87.4
	September	6.9	9.3	2.1	2.1	11.4	1.2	12.6	18.8	16.7	90.2
ATTENDING SCHOOL OR A TERTIARY INSTITUTION FULL TIME											
1993	September	0.4	5.5	0.4	1.5	7.0	13.8	20.8	21.4	7.2	33.7
1995	September	0.3	6.4	0.2	1.9	8.3	13.7	22.0	22.9	8.6	37.7
1996	July	0.1	6.5	..	1.3	7.8	13.2	21.0	16.7	6.2	37.1
	August	0.2	6.1	0.4	1.5	7.7	14.6	22.2	19.5	6.8	34.7
	September	0.2	6.8	0.3	1.7	8.5	13.0	21.5	20.0	7.9	39.5
TOTAL											
1993	September	6.9	14.2	3.8	5.0	19.2	15.3	34.5	26.3	14.5	55.6
1995	September	6.9	15.1	2.3	3.9	19.1	14.9	34.0	20.6	11.5	56.1
1996	July	6.7	15.2	3.0	4.3	19.5	14.6	34.1	22.0	12.6	57.1
	August	6.6	14.5	2.2	3.6	18.1	16.1	34.1	19.8	10.6	52.9
	September	7.0	16.0	2.3	3.8	19.9	14.3	34.2	19.3	11.1	58.2

<sup>1</sup> Persons aged 15-19 years.

<sup>2</sup> For explanation of terms and concepts, refer to *Labour Force, Australia*, ABS catalogue number 6203.0.  
(Source: Labour Force Estimates—microfiche tables.)

## 8

ALL EMPLOYED PERSONS BY OCCUPATION<sup>1</sup>: Original

Occupation	May 1995	May 1996		Proportion of total employed		
	Persons	Males	Females	Persons	May 1995	May 1996
	'000	'000	'000	'000	%	%
<b>Managers and administrators</b>	19.0	13.6	3.4	17.0	9.4	8.5
Farmers and farm managers	6.5	4.0	0.9	4.9	3.2	2.4
Managing supervisors	6.9	6.5	1.5	8.0	3.4	4.0
Other	5.6	3.1	1.2	4.1	2.8	2.0
<b>Professionals</b>	25.1	12.8	10.7	23.5	12.5	11.7
Building and professional engineers	2.4	1.6	—	1.6	1.2	0.8
Health diagnosis and treatment practitioners	3.0	1.3	1.5	2.8	1.5	1.4
School teachers	8.5	1.4	3.7	5.1	4.2	2.5
Business professionals	3.7	3.8	1.4	5.2	1.9	2.6
Other	7.4	4.7	4.1	8.8	3.7	4.4
<b>Para-professionals</b>	14.3	7.3	5.8	13.1	7.1	6.5
Engineering and building associates and technicians	1.6	1.7	0.1	1.8	0.8	0.9
Registered nurses	5.7	0.4	4.0	4.5	2.8	2.2
Other	7.0	5.2	1.7	6.8	3.5	3.4
<b>Tradespersons</b>	29.1	26.3	3.4	29.7	14.4	14.8
Metal fitting and machining tradespersons	2.8	2.4	—	2.4	1.4	1.2
Electrical and electronics tradespersons	4.0	4.5	0.1	4.6	2.0	2.3
Building tradespersons	6.4	6.9	0.1	7.0	3.2	3.5
Other	15.9	12.4	3.2	15.7	7.9	7.8
<b>Clerks</b>	33.0	8.8	26.1	34.9	16.4	17.4
Stenographers and typists	3.8	0.1	3.3	3.4	1.9	1.7
Receptionists, telephonists and messengers	5.0	1.2	4.6	5.7	2.5	2.8
Other	24.2	7.5	18.2	25.8	12.0	12.8
<b>Salespersons and personal service workers</b>	34.2	9.7	23.0	32.7	17.0	16.3
Sales representatives	2.9	2.0	1.3	3.3	1.4	1.6
Sales assistants	15.3	4.0	10.5	14.5	7.6	7.2
Other	16.0	3.7	11.2	14.9	7.9	7.4
<b>Plant and machine operators, and drivers</b>	16.2	15.1	2.1	17.2	8.0	8.6
Road and rail transport drivers	6.9	6.1	0.6	6.6	3.4	3.3
Machine operators	4.4	3.3	1.5	4.8	2.2	2.4
Other	4.9	5.7	—	5.8	2.4	2.9
<b>Labourers and related workers</b>	30.6	21.2	11.6	32.8	15.2	16.3
Trades assistants and factory hands	5.4	3.7	1.4	5.1	2.7	2.5
Agricultural labourers and related workers	7.0	5.8	2.2	8.1	3.5	4.0
Cleaners	6.4	1.3	4.6	5.9	3.2	2.9
Construction and mining labourers	2.0	2.9	0.1	3.0	1.0	1.5
Other	9.8	7.5	3.3	10.7	4.9	5.3
<b>Total employed</b>	<b>201.4</b>	<b>115.0</b>	<b>86.0</b>	<b>200.9</b>	<b>100.0</b>	<b>100.0</b>

<sup>1</sup> For explanation of terms and concepts, refer to *Labour Force, Australia*, ABS catalogue number 6203.0. (Source: Labour Force Estimates—unpublished data.)

## 9

EMPLOYED WAGE AND SALARY EARNERS, SECTOR AND INDUSTRY<sup>1</sup>: Original

Industry	Employees, February 1995					Percentage distribution	
	Private		Public		Private and public Persons	February 1993	February 1995
	No. ('000)	No. ('000)	Males	Females			
Agriculture, forestry, fishing and hunting	n.a.	0.7	n.a.	n.a.	n.a.	n.a.	n.a.
Mining	1.5	—	1.4	0.1	1.5	1.7	1.1
Manufacturing	20.3	0.1	15.4	4.9	20.4	14.8	15.2
Electricity, gas and water, construction	6.0	2.7	7.6	1.0	8.7	6.8	6.5
Wholesale and retail trade	26.0	—	15.0	11.0	26.1	20.8	19.4
Transport and storage	3.6	1.5	4.1	1.1	5.2	4.1	3.9
Communication	—	2.3	1.8	0.6	2.3	1.6	1.7
Finance, property and business services	10.1	0.9	4.9	6.0	10.9	9.3	8.1
Public administration and defence	—	10.5	6.5	4.0	10.5	7.0	7.8
Community services	14.0	23.4	11.9	25.5	37.4	24.9	27.8
Recreation, personal and other services	10.2	0.6	4.1	6.7	10.8	8.4	8.0
<b>Total all industries</b>	<b>91.8</b>	<b>42.6</b>	<b>73.2</b>	<b>61.2</b>	<b>134.4</b>	<b>100.0</b>	<b>100.0</b>

<sup>1</sup> For explanation of terms and concepts, refer to *Employed Wage and Salary Earners, Australia*, catalogue number 6248.0.  
(Source: *Employed Wage and Salary Earners*, ABS catalogue number 6248.0.)

## 10

## AVERAGE HOURS WORKED: Original

Month	Average weekly total hours worked, all employed persons <sup>1</sup>			Average weekly overtime hours <sup>2</sup>		Percentage of employees working overtime <sup>2</sup>
	Males	Females	Persons	Per employee	Per employee working overtime	
<b>1993</b>						
August	38.8	27.8	34.1	0.8	6.3	13.2
<b>1995</b>						
August	40.9	29.6	36.0	0.8	5.7	14.4
November	39.7	26.5	33.9	0.9	6.4	14.7
<b>1996</b>						
February	37.7	25.6	32.7	0.9	6.5	14.1
May	40.1	27.0	34.5	0.9	5.6	16.0
August	38.8	27.2	33.9	0.8	5.4	14.4

<sup>1</sup> For explanation of terms and concepts, refer to *Labour Force, Australia*, ABS catalogue number 6203.0.

<sup>2</sup> For explanation of terms and concepts, refer to *Job Vacancies and Overtime, Australia*, ABS catalogue number 6354.0.

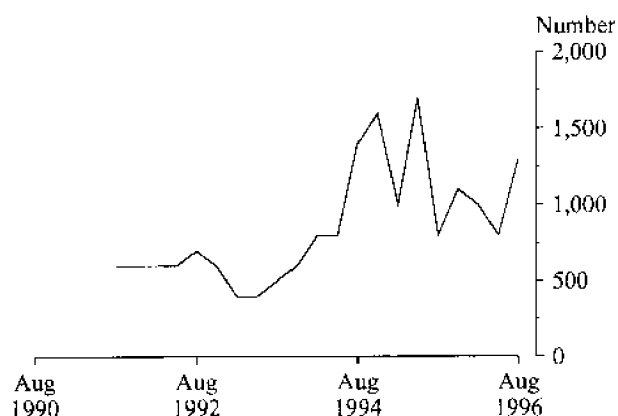
## 11 JOB VACANCIES<sup>1</sup>: Original

Period	Number	Rate <sup>2</sup> %
<b>1993</b>		
August	500	0.4
<b>1995</b>		
August	800	0.6
November	1 100	0.7
<b>1996</b>		
February	1 000	0.6
May	800	0.5
August	1300	0.8

<sup>1</sup> For explanation of terms and concepts refer to *Job Vacancies and Overtime, Australia*, catalogue number 6354.0.

<sup>2</sup> Job vacancies are expressed as a percentage of the number of job vacancies divided by the number of employees plus job vacancies.

### JOB VACANCIES: Original



## 12 INDUSTRIAL DISPUTES<sup>1</sup>: Original

Month	Working days lost	Twelve months ending	Working days lost per thousand employees
<b>1995</b>			
July	800	July	38
August	100	August	33
September	100	September	30
October	—	October	30
November	100	November	30
December	200	December	22
<b>1996</b>			
January	800	January	24
February	100	February	23
March	—	March	20
April	100	April	20
May	200	May	19
June	400	June	17
July	4 400	July	39
<b>Twelve months ended 1996</b>			
July	6 400		

<sup>1</sup> For explanation of terms and concepts, refer to *Industrial Disputes, Australia*, ABS catalogue number 6321.0.

## 13

AVERAGE WEEKLY EARNINGS OF EMPLOYEES<sup>1</sup>: Original and trend

Quarter	Survey reference period	Full-time adult males		All males	Full-time adult females		All females	Full-time adult persons		All employees
		Weekly ordinary time earnings	Weekly total earnings	Weekly total earnings	Weekly ordinary time earnings	Weekly total earnings	Weekly total earnings	Weekly ordinary time earnings	Weekly total earnings	Weekly total earnings
		\$	\$	\$	\$	\$	\$	\$	\$	\$
ORIGINAL										
<b>1995</b>										
June	19 May	635.70	678.60	608.80	546.50	556.90	385.60	606.40	638.60	500.70
September	18 August	634.60	675.50	598.70	544.50	555.10	384.80	604.20	634.80	495.60
December	17 November	647.90	687.90	615.50	556.10	569.00	403.20	617.30	648.20	513.80
<b>1996</b>										
March	16 February	652.70	691.40	617.80	561.10	569.30	391.80	622.90	651.70	510.00
June	17 May	663.40	702.80	621.90	570.10	583.20	389.30	631.90	662.40	503.30
TREND										
<b>1995</b>										
June	19 May	633.50	675.70	604.20	546.30	557.80	390.10	604.80	636.60	501.00
September	18 August	637.90	679.80	609.10	548.90	559.80	392.00	608.60	640.30	504.90
December	17 November	645.10	685.20	612.00	553.70	564.50	392.70	614.70	645.40	506.70
<b>1996</b>										
March	16 February	653.60	691.70	614.30	560.50	571.30	392.00	622.30	651.40	506.20
June	17 May	663.70	701.10	618.10	568.50	580.30	391.50	631.50	659.50	504.70

<sup>1</sup> For explanation of terms and concepts, refer to *Average Weekly Earnings, States and Australia*, ABS catalogue number 6302.0. (Source: *Average Weekly Earnings, States and Australia*, ABS catalogue number 6302.0.)

## 14

WEEKLY AWARD RATES OF PAY INDEXES, FULL-TIME ADULT EMPLOYEES<sup>1</sup>: Original  
(Base: June 1985 = 100.0)

Industry	1993	1995	1996		
	August	August	June	July	August
Mining	137.7	137.7	137.7	137.7	137.7
Manufacturing	145.0	149.6	152.1	152.1	152.1
Electricity, gas and water	131.9	136.3	136.6	136.6	136.6
Construction	141.3	144.0	145.1	145.1	145.1
Wholesale trade	137.6	142.7	143.5	143.5	143.5
Retail trade	136.6	142.7	142.8	142.8	142.8
Transport and storage	137.9	140.0	143.9	143.9	143.9
Communication	135.4	135.4	135.4	135.4	135.4
Finance, property and business services	137.4	138.1	139.6	139.6	139.6
Public administration and defence	147.7	152.9	155.1	155.1	155.1
Community services	140.3	144.8	145.2	145.2	145.2
Recreation, personal and other services	146.4	153.0	153.8	153.8	153.8
<b>Total all industries</b>	<b>140.5</b>	<b>144.5</b>	<b>145.7</b>	<b>145.7</b>	<b>145.7</b>

<sup>1</sup> For explanation of terms and concepts, refer to *Award Rates of Pay Indexes, Australia*, ABS catalogue number 6312.0. (Source: *Award Rates of Pay Indexes, Australia*, ABS catalogue number 6312.0.)

## 15

SUMMARY OF ANNUAL MOVEMENTS IN WAGES AND PRICES: **Original**

Period	CPI. All groups Hobart	Price index of materials used in house building. All groups, Hobart	Price index of materials used in building other than house building. All groups, Hobart	Average weekly total earnings, full-time adult employees	Weekly award rates of pay index, full-time adult employees
PERCENTAGE CHANGE FROM PREVIOUS YEAR					
<b>1993</b>					
September	..	2.0	2.4	..	0.3
<b>1995</b>					
September	..	4.3	3.5	..	1.7
<b>1996</b>					
January	..	3.2	2.9	..	1.4
February	..	2.2	2.4	3.2	1.4
March	3.4	1.6	2.0	..	1.2
April	..	1.7	1.4	..	1.2
May	..	0.6	1.2	3.7	1.1
June	3.0	0.7	1.0	..	1.3
July	..	- 0.1	1.0	..	0.9
August	..	- 0.2	0.9	n.y.a.	0.9
September	2.3	n.y.a.	n.y.a.	..	n.y.a.

(Sources:

Consumer Price Index, ABS catalogue number 6401.0,

Price Index of Materials Used in House Building, ABS catalogue number 6408.0,

Price Index of Materials Used in Other than House Building, ABS catalogue number 6407.0,

Average Weekly Earnings, States and Australia, ABS catalogue number 6302.0,

Award Rates of Pay Indexes, Australia, ABS catalogue number 6312.0.)

## 16

HOUSE PRICE INDEX NUMBERS<sup>1</sup>, HOBART: **Original**

(Base of each Index: 1989 90 = 100.0)

	Established house price index		Project home price index	
	Index	% change <sup>2</sup>	Index	% change <sup>2</sup>
1993-94	122.5	5.1	117.7	3.2
1994-95	129.0	5.3	121.3	3.1
1995-96	129.8	0.6	123.4	1.7
<b>1994</b>				
June	126.0	2.4	119.4	1.4
September	128.2	1.7	120.1	0.6
December	128.2	0.0	120.5	0.3
<b>1995</b>				
March	129.4	0.9	121.6	0.9
June	130.1	0.5	123.1	1.2
September	129.2	- 0.7	123.5	0.3
December	129.1	- 0.1	123.5	0.0
<b>1996</b>				
March	129.8	+ 0.5	123.3	- 0.2
June	131.2	+ 1.1	123.3	0.0

<sup>1</sup> Used in calculating the mortgage interest charges component of the Consumer Price Index.<sup>2</sup> Percentage change over previous period.

(Source: House Price Indexes: Eight Capital Cities, ABS catalogue number 6416.0)

CONSUMER PRICE INDEX, HOBART AND EIGHT CAPITAL CITIES COMBINED<sup>1, 2</sup>: Original

(Base of each index: year 1989-90 = 100.0)

Period	Hobart					
	Food	Clothing	Housing <sup>3</sup>	Household equipment and operation	Transportation	Tobacco and alcohol
<b>1994</b>						
March	112.6	106.4	93.3	112.2	111.9	134.3
June	112.2	106.4	94.2	112.4	112.8	134.8
September	113.9	106.6	94.8	112.8	113.9	137.2
December	113.3	105.3	97.6	113.9	115.0	139.1
<b>1995</b>						
March	115.4	105.0	102.7	114.9	115.1	140.3
June	116.1	106.1	104.5	115.4	117.2	143.1
September	117.3	105.9	106.0	116.5	119.4	144.3
December	117.1	105.6	106.5	117.5	120.1	145.9
<b>1996</b>						
March	118.1	106.3	107.2	117.8	119.0	150.3
June	118.4	106.0	107.6	118.5	119.8	153.3
September	120.0	105.9	107.4	119.1	119.7	153.7

Period	Hobart				Weighted average of eight capital cities	
	Health and personal care	Recreation and education	Index, all groups	% change over previous period, all groups	Index	% change over previous period
<b>1994</b>						
March	137.5	109.7	111.9	+ 0.3	110.4	+ 0.4
June	137.9	111.3	112.4	+ 0.4	111.2	+ 0.7
September	138.7	111.7	113.3	+ 0.8	111.9	+ 0.6
December	138.7	113.0	114.2	+ 0.8	112.8	+ 0.8
<b>1995</b>						
March	140.4	115.4	116.1	+ 1.7	114.7	+ 1.7
June	141.0	114.0	117.1	+ 0.9	116.2	+ 1.3
September	146.7	113.3	118.4	+ 1.1	117.6	+ 1.2
December	146.9	115.8	119.2	+ 0.7	118.5	+ 0.8
<b>1996</b>						
March	149.7	117.1	120.1	+ 0.8	119.0	+ 0.4
June	150.5	116.0	120.6	+ 0.4	119.8	+ 0.7
September	154.1	115.1	121.1	+ 0.4	120.1	+ 0.3

<sup>1</sup> Further information on construction of CPI indexes is contained in the bulletin *The Australian Consumer Price Index Concepts, Sources and Methods* (Catalogue No. 6461.0).

<sup>2</sup> The CPI is now published on a reference base of 1989-90 = 100.0.  
(Source: *Consumer Price Index*, ABS catalogue number 6401.0.)



(Base year: 1989-90 = 100.0)

*Index numbers for selected major building materials*

<i>Period</i>	<i>Structural timber</i>	<i>Clay bricks</i>	<i>Ready mixed concrete</i>	<i>Precast concrete products</i>	<i>Steel decking, cladding etc.</i>	<i>Structural steel</i>
<b>1995</b>						
June	125.8	118.1	118.0	122.5	107.5	119.6
July	124.9	118.1	117.1	130.3	110.7	119.6
August	122.0	118.1	117.0	130.3	110.7	119.6
September	122.1	123.2	116.7	130.3	111.0	119.6
October	119.7	123.2	117.2	130.3	111.0	120.9
November	120.1	123.2	116.3	130.3	111.0	120.9
December	120.1	123.3	114.5	130.4	111.0	121.9
<b>1996</b>						
January	120.1	123.3	116.9	130.4	111.0	121.9
February	116.9	123.3	115.9	128.4	112.1	121.9
March	116.9	123.7	113.2	128.4	112.3	121.9
April	116.9	123.7	113.2	128.4	112.3	122.7
May	114.4	123.7	112.9	128.4	112.3	122.7
June p	113.8	124.5	112.1	128.4	112.3	123.7
July p	114.5	124.5	114.2	132.6	112.3	125.2
August p	112.7	124.5	115.5	132.6	112.3	126.0

*Index numbers for selected major building materials*

<i>Period</i>	<i>Reinforcing steel bar, fabric and mesh</i>	<i>Aluminium windows</i>	<i>Fabricated steel products</i>	<i>Builders' hardware</i>	<i>Sand &amp; aggregate</i>	<i>Paint &amp; other coatings</i>	<i>Non-ferrous pipes &amp; fittings</i>
<b>1995</b>							
June	105.7	104.5	107.6	118.1	133.1	114.9	183.3
July	107.0	104.5	107.6	118.9	133.1	116.3	184.9
August	107.4	104.5	107.7	118.9	133.1	119.5	184.4
September	109.2	104.5	107.6	120.4	133.1	118.9	169.0
October	109.2	104.5	108.3	120.7	133.1	118.9	169.1
November	109.2	104.5	108.3	119.2	133.1	118.7	169.1
December	109.2	104.5	108.3	117.7	133.1	121.4	169.1
<b>1996</b>							
January	109.2	104.5	108.3	118.3	133.1	121.5	169.1
February	109.2	104.5	108.1	117.7	133.1	121.5	169.4
March	109.2	104.7	108.3	117.7	133.1	121.5	169.4
April	109.2	104.4	111.5	117.3	133.1	118.1	172.8
May	109.2	104.4	111.5	116.0	133.1	120.6	174.5
June p	109.2	104.4	111.9	116.1	133.1	124.5	174.5
July p	109.2	104.4	111.9	115.4	133.1	126.1	168.7
August p	110.7	104.4	112.4	118.9	133.1	126.1	167.9

(Source: Price Index of Materials Used in Other than House Building, ABS catalogue number 6407.0.)

continued

Period	All electrical materials		All mechanical services		All plumbing materials	
	Index	% change over previous period	Index	% change over previous period	Index	% change over previous period
<b>1995</b>						
June	116.7	+ 1.3	114.0	+ 0.1	129.4	+ 0.4
July	117.9	+ 1.0	114.1	+ 0.1	129.7	+ 0.2
August	118.9	+ 0.8	114.0	- 0.1	129.9	+ 0.2
September	118.9	0.0	113.3	- 0.6	126.6	- 2.5
October	118.7	- 0.2	115.2	+ 1.7	127.4	+ 0.6
November	118.7	0.0	114.7	- 0.4	127.4	0.0
December	118.5	0.2	114.8	+ 0.1	127.5	+ 0.1
<b>1996</b>						
January	117.8	0.6	114.8	0.0	127.5	0.0
February	117.8	0.0	115.4	+ 0.5	127.6	+ 0.1
March	118.6	+ 0.7	115.7	+ 0.3	127.6	0.0
April	118.3	- 0.3	116.1	+ 0.3	126.6	- 0.8
May	119.6	+ 1.1	116.1	0.0	127.1	+ 0.4
June p	119.5	- 0.1	116.5	+ 0.3	127.3	+ 0.2
July p	119.5	0.0	116.3	- 0.2	127.0	- 0.2
August p	113.7	- 4.9	117.4	+ 0.9	126.0	- 0.8
<b>All groups excluding electrical materials and mechanical services</b>						
Period	Index	% change over previous period	All groups			
			Index	% change over previous period		
<b>1995</b>						
June	114.6	+ 0.4	114.2	+ 0.4		
July	115.1	+ 0.4	114.7	+ 0.4		
August	115.3	+ 0.2	114.9	+ 0.2		
September	115.5	+ 0.2	114.9	0.0		
October	115.8	+ 0.3	115.5	+ 0.5		
November	115.7	- 0.1	115.3	- 0.2		
December	115.5	- 0.2	115.1	- 0.2		
<b>1996</b>						
January	115.9	+ 0.3	115.3	+ 0.2		
February	115.6	- 0.3	115.2	- 0.1		
March	115.3	- 0.3	115.1	- 0.1		
April	115.2	- 0.1	115.1	0.0		
May	115.3	+ 0.1	115.2	+ 0.1		
June p	115.3	0.0	115.3	+ 0.1		
July p	116.1	+ 0.7	115.8	+ 0.4		
August p	116.5	+ 0.3	115.9	+ 0.1		

(Source: Price Index of Materials Used in Other than House Building, ABS catalogue number 6407.0.)

## 19

PRODUCTION OF SELECTED COMMODITIES: **Original**

Year or month	Dairy products <sup>1</sup>			Staff-hours worked <sup>2</sup>					
	Whole milk <sup>4</sup>	Factory butter <sup>5</sup>	Factory cheese	Textile manufacturing <sup>6</sup>	Vegetable preserving				
	million litres	tonnes	tonnes	'000	'000				
1993-94	447.3	7 846	22 461	1 575	2 002				
1994-95	436.5	8 105	20 529	1 527	1 838				
1995-96	513.8	9 589	25 371	1 443	1 784				
<b>1993</b>									
July	9.2	204	400	162	182				
<b>1995</b>									
July	10.2	157	577	131	145				
<b>1996</b>									
May	31.0	564	1 576	131	185				
June	16.5	706	991	110	143				
July	11.7	196	498	127	154				
Year or month	Newsprint <sup>7</sup>	Refined zinc	Metal, refin. index <sup>3</sup>	Electricity	Gas				
						'000 tonnes	'000 tonnes	million kW.h	'000 MJ
1993-94	208.9	193.8	105.5	8 855	55 767				
1994-95	222.7	189.8	98.3	8 688	51 933				
1995-96	242.9	207.8	104.7	9 100	41 035				
<b>1993</b>									
July	19.6	18.2	115.8	827	6 548				
<b>1995</b>									
July	19.9	17.5	103.3	850	5 520				
<b>1996</b>									
May	20.6	18.2	114.8	833	3 840				
June	19.6	17.3	110.5	826	3 863				
July	21.0	17.5	114.8	882	3 949				

<sup>1</sup> Source: Australian Dairy Corporation.

<sup>2</sup> Changing productivity per staff-hour makes these indicators unsatisfactory for long-term comparisons.

<sup>3</sup> *Metallurgical refining index* (Base: 1979-80 = 100.0) Output from selected establishments covering the smelting and refining of ferro-alloys, zinc and aluminium. The weighting pattern is based on the establishments' value added as derived from the 1979-80 Manufacturing Census. For multi-product establishments, value added was apportioned to products on the basis of gross receipts from each product.

<sup>4</sup> Includes the whole milk equivalent of farm cream intake.

<sup>5</sup> Includes butter equivalent of butter oil.

<sup>6</sup> Includes spinning, weaving and carpet making. Reported by establishments which manufacture textiles only, or manufacture clothing and textiles in the one plant.

<sup>7</sup> Excludes production of directory newsprint and high grade specialty paper.

(Source: ABS unpublished data.)

## 20

LIVESTOCK SLAUGHTERING: **Original**

Year or month	Cattle					
	Bulls, bullocks and steers	Cows and heifers	Calves	Sheep	Lambs	Pigs
	'000	'000	'000	'000	'000	'000
1993-94	101.8	85.2	23.2	526.1	437.8	95.8
1994-95	111.0	96.9	29.2	569.3	477.2	92.9
1995-96	p 99.2	85.7	41.7	390.2	410.0	81.8
<b>1994</b>						
August	5.9	4.5	8.4	24.6	38.5	7.3
<b>1995</b>						
August	p 5.0	4.8	14.0	18.2	27.3	7.3
September	p 5.6	4.4	16.6	18.0	29.0	7.1
October	p 7.0	6.3	5.3	25.5	28.6	6.1
November	p 8.8	7.1	0.8	36.5	34.9	6.9
December	p 9.5	7.6	0.5	44.8	40.5	8.4
<b>1996</b>						
January	p 11.2	6.8	0.1	43.6	38.9	6.1
February	p 8.6	7.8	0.1	39.8	40.4	6.3
March	p 9.0	8.9	0.2	40.6	41.2	7.2
April	p 6.6	6.4	0.9	31.4	30.7	6.0
May	p 10.8	10.7	1.4	42.5	39.7	7.3
June	p 9.1	9.0	0.7	30.6	33.1	6.6
July	p 7.6	5.5	1.8	22.9	26.0	6.8
August	p 6.4	4.2	13.5	12.2	21.6	5.9

(Source: *Livestock Products, Australia*, ABS catalogue number 7215.0.)

## 21

LIVESTOCK SLAUGHTERING: **Seasonally adjusted and trend**

Month	Seasonally adjusted			Trend		
	Cattle and calves	Sheep and lambs	Pigs	Cattle and calves	Sheep and lambs	Pigs
	no.	no.	no.	no.	no.	no.
<b>1994</b>						
August	18 187	79 688	7 862	18 178	99 994	7 853
<b>1995</b>						
August	r 18 144	r 68 665	r 7 355	19 547	68 271	7 151
September	r 19 313	r 65 438	r 7 382	19 719	68 019	7 019
October	r 19 438	r 70 517	r 6 878	20 394	69 120	6 939
November	r 19 815	r 68 478	r 6 460	20 894	70 192	6 915
December	r 27 549	r 76 726	r 6 834	20 887	70 389	6 921
<b>1996</b>						
January	r 18 792	r 71 741	r 7 356	20 393	69 293	6 901
February	r 18 067	r 64 165	r 6 762	19 622	67 555	6 861
March	r 18 238	r 63 546	r 6 995	18 969	65 911	6 796
April	r 15 919	r 60 043	r 6 558	18 749	64 536	6 682
May	r 21 798	r 69 379	r 6 645	19 013	63 452	6 548
June	r 21 143	r 61 178	r 6 173	19 511	62 350	6 438
July	r 18 482	r 67 939	r 6 881	20 026	61 023	6 347
August	19 560	50 709	6 030	20 257	59 735	6 298

(Source: ABS unpublished data.)

## 22

MEAT PRODUCTION<sup>1</sup>: Original

<i>Year or month</i>	<i>Beef</i> tonnes	<i>Veal</i> tonnes	<i>Mutton</i> tonnes	<i>Lamb</i> tonnes	<i>Pigmeat</i> <sup>2</sup> tonnes	<i>Total</i> tonnes
1993-94	47 458	515	9 992	7 047	6 019	71 031
1994-95	49 827	1 059	11 230	8 412	5 982	76 511
1995-96 p	44 812	1 091	8 283	7 727	5 346	67 259
<b>1994</b>						
August	2 512	214	489	716	517	4 447
<b>1995</b>						
August p	2 312	353	378	514	475	4 031
September p	2 354	418	372	546	470	4 161
October p	3 151	141	529	540	399	4 761
November p	3 846	24	797	659	449	5 775
December p	4 145	17	983	764	546	6 456
<b>1996</b>						
January p	4 467	4	937	733	397	6 538
February p	4 122	5	852	761	410	6 150
March p	4 175	9	860	777	470	6 290
April p	3 012	26	657	579	397	4 671
May p	5 230	42	892	749	476	7 389
June p	4 429	21	638	624	430	6 143
July p	3 203	48	475	488	443	4 657
August p	2 564	344	249	407	385	3 949

<sup>1</sup> Carcass weight.

<sup>2</sup> Includes pork used for production of bacon and ham.

(Source: *Livestock Products, Australia*, ABS catalogue number 7215.0.)

## 23

## PRINCIPAL MINERAL CONCENTRATES PRODUCED: Original

<i>Year or quarter</i>	<i>Copper</i>	<i>Iron</i> (pellets)	<i>Lead</i>	<i>Lead-zinc</i>	<i>Tin</i>	<i>Zinc</i>
<i>Year or quarter</i>	'000 tonnes	'000 tonnes	'000 tonnes	'000 tonnes	'000 tonnes	'000 tonnes
1993-94	128.1	1 565.9	93.4	57.5	13.4	316.5
1994-95	59.4	1 483.8	97.4	45.3	14.3	350.6
1995-96	53.5	1 681.3	106.3	38.6	16.0	361.5
<b>1995</b>						
March	3.4	301.3	18.4	9.6	3.2	90.5
June	3.9	415.8	26.5	15.8	4.2	86.2
September	4.5	463.0	28.4	11.2	4.1	93.6
December	r 7.8	416.0	29.7	6.8	4.1	98.1
<b>1996</b>						
March	r 19.8	326.9	24.1	11.4	r 3.5	84.8
June	21.5	475.4	24.1	9.2	4.3	85.0

(Source: Tasmania—Development and Resources)

## 24

SAWMILLS AND PLYWOOD MILLS, LOGS DELIVERED AND TIMBER PRODUCED: **Original**

Year or quarter	Tasmanian-grown logs delivered					Sawn, peeled and sliced timber produced <sup>1</sup>				
	Eucalypts	Hardwoods, excluding eucalypts <sup>2</sup>	Plantation <sup>3</sup> softwoods	Native softwoods <sup>4</sup>	Total	Eucalypts	Hardwoods, excluding eucalypts <sup>2</sup>	Plantation <sup>3</sup> softwoods	Native softwoods <sup>4</sup>	Total
1993-94	584.3	15.3	299.2	1.5	900.4	203.5	3.1	141.0	0.5	348.0
1994-95	653.1	12.6	304.9	2.8	973.4	212.5	4.3	142.7	0.6	360.1
1995-96	597.4	12.4	342.4	1.4	953.6	189.0	4.4	151.1	0.5	345.0
<b>1994</b>										
June	149.4	4.5	76.1	0.4	230.4	52.1	1.1	34.1	0.2	87.5
September	170.2	3.8	76.3	0.6	250.9	59.5	1.2	35.1	0.1	95.9
December	163.0	3.7	68.8	0.3	235.8	55.2	1.0	36.1	0.2	92.5
<b>1995</b>										
March	132.3	3.0	82.5	1.1	218.9	44.5	1.0	37.0	0.1	82.6
June	187.6	2.1	77.4	0.7	267.8	53.4	1.1	34.6	0.1	89.2
September	182.6	1.7	79.6	0.2	264.2	54.4	1.3	35.8	0.1	91.6
December	137.8	1.4	69.9	0.2	209.4	48.1	1.0	35.8	0.2	85.2
<b>1996</b>										
March	135.4	6.4	97.7	0.3	239.8	40.7	0.9	40.9	0.1	82.7
June	141.6	2.9	95.1	0.6	240.2	45.7	1.2	38.6	0.1	85.6

<sup>1</sup> Includes plywood, veneer and sliced timber production converted to an equivalent cubic measurement.

<sup>2</sup> Includes blackwood, myrtle, sassafras etc.

<sup>3</sup> Radiata pine.

<sup>4</sup> Includes Huon pine, celery top pine and King William pine.

(Source: ABS unpublished data.)

## 25

CHIPPING AND GRINDING OF WOOD<sup>1</sup>: **Original**

Year or quarter	Producing locations <sup>2</sup>	Materials used <sup>3</sup>		
		Logs delivered <sup>4</sup>	Sawmill offcuts	Chipped and ground wood production
		no.	'000 m <sup>3</sup>	'000 m <sup>3</sup>
1993-94	30	3 448.8	339.8	3 726.1
1994-95	31	4 064.1	394.2	4 343.1
1995-96	33	3 510.0	457.9	3 820.1
<b>1994</b>				
June	30	841.6	83.3	944.0
September	30	939.8	86.3	991.3
December	31	1 065.8	92.0	1 115.4
<b>1995</b>				
March	31	1 090.6	95.7	1 177.1
June	31	967.9	120.1	1 059.3
September	32	935.6	118.2	1 044.1
December	31	932.1	104.6	939.9
<b>1996</b>				
March	32	842.6	109.8	958.0
June	33	799.6	125.3	878.1

<sup>1</sup> Both hardwoods and softwoods, separate details are not available.

<sup>2</sup> Capable of producing at end of year or actually producing during quarter.

<sup>3</sup> Data reported by weight, converted to cubic measure by the factor 0.95 m<sup>3</sup> per tonne.

<sup>4</sup> Includes log equivalent of limbwood and billets.

(Source: ABS unpublished data.)

Year or quarter	Sawmilling and plywood milling			Chipping and grinding <sup>1</sup>			Total		
	Crown land <sup>2</sup>	Private land	Total	Crown land <sup>2</sup>	Private land	Total	Crown land <sup>2</sup>	Private land	Total
	'000 m <sup>3</sup>	'000 m <sup>3</sup>	'000 m <sup>3</sup>	'000 m <sup>3</sup>	'000 m <sup>3</sup>	'000 m <sup>3</sup>	'000 m <sup>3</sup>	'000 m <sup>3</sup>	'000 m <sup>3</sup>
1993-94	696.5	203.9	900.4	1 697.0	1 751.8	3 448.8	2 393.5	1 955.7	4 349.2
1994-95	780.3	193.2	973.4	1 966.8	2 097.3	4 064.1	2 747.1	2 290.4	5 037.6
1995-96	767.7	185.9	953.6	1 579.6	1 930.4	3 510.0	2 347.3	2 116.2	4 463.5
<b>1994</b>									
June	182.2	48.3	230.4	397.7	443.9	841.6	579.9	492.2	1 072.0
September	199.8	51.1	250.9	481.0	458.8	939.8	680.8	509.9	1 190.7
December	180.6	55.2	235.8	467.9	597.8	1 065.8	648.5	653.0	1 301.6
<b>1995</b>									
March	184.7	34.2	218.9	480.3	610.3	1 090.6	665.0	644.5	1 309.5
June	215.2	52.7	267.8	537.6	430.3	967.9	752.8	483.0	1 235.8
September	212.5	51.7	264.2	438.2	497.4	935.6	650.6	549.2	1 199.8
December	163.9	45.4	209.4	388.3	543.8	932.1	552.2	589.3	1 141.5
<b>1996</b>									
March	200.8	39.0	239.8	405.3	437.3	842.6	606.1	476.3	1 082.4
June	190.4	49.7	240.2	347.9	451.8	799.6	538.3	501.5	1 039.8

<sup>1</sup> Logs used are generally below sawmilling standard; includes log equivalent of limbwood and billets.

<sup>2</sup> Comprises all areas (including concession areas) from which royalties are payable to Forestry Tasmania.  
(Source: ABS unpublished data.)

## 27

## BUILDING APPROVALS: Original

New residential building									
Year or month	Houses	Other <sup>3</sup>	Total dwelling units	Value of total dwelling units	Conversions etc.	Value of alterations and additions <sup>1</sup> to residential building	Value of non-residential building <sup>2</sup>		Total value of building
	no.	no.	no.	\$'000	no.	\$'000	Private	Total	\$'000
1993-94	3 113	1 034	4 147	301 963	11	39 522	81 251	145 922	487 407
1994-95	2 576	596	3 172	244 623	14	39 963	117 984	161 567	446 152
1995-96	1 938	601	2 539	217 445	7	36 890	119 849	216 752	471 086
<b>1993</b>									
August	264	119	383	27 019	--	2 704	5 519	7 901	37 624
<b>1995</b>									
August	167	54	221	17 288	2	2 925	15 723	23 775	43 988
<b>1996</b>									
May	143	32	175	14 219	--	3 014	8 087	32 308	49 541
June	132	62	194	16 159	1	3 472	9 504	11 641	31 272
July	108	13	121	9 527	--	2 282	24 234	38 187	49 996
August	158	18	176	15 048	1	3 040	7007	17 482	35 569

<sup>1</sup> Valued at \$10,000 and over.

<sup>2</sup> Comprises non-residential building (new plus alterations and additions) valued at \$50,000 and over.

<sup>3</sup> New individual dwelling units (e.g. flats, home units and villa units).

(Source: *Building Approvals, Tasmania*, ABS catalogue number 8731.6.)

## 28

## DWELLING COMMENCEMENTS: Original

Houses								
Year or month	Double brick	Brick veneer	Fibre cement	Timber	Other and not stated	Total	Other residential buildings <sup>1</sup>	Total dwelling units
	no.	no.	no.	no.	no.	no.	no.	no.
1993-94	306	2 120	103	441	79	3 049	973	4 022
1994-95	132	1 816	93	402	62	2 505	645	3 150
1995-96	224	1 160	79	311	86	1 860	568	2 428
<b>1993</b>								
July	28	142	5	34	1	210	77	287
<b>1995</b>								
July	5	107	2	37	2	153	30	183
<b>1996</b>								
April	24	71	7	23	6	131	130	261
May	36	66	4	27	6	139	32	171
June	43	40	5	23	19	130	141	271
July	37	46	3	19	10	115	31	146

<sup>1</sup> New individual dwelling units (e.g. flats, home units and villa units).

(Source: *Dwelling Unit Commencements Reported by Approving Authorities, Tasmania*, ABS catalogue number 8741.6.)



## 29

BANKING STATISTICS<sup>1</sup>: Original

Month	Deposits				
	Current bearing interest	Current - not bearing interest	Fixed	Investment savings accounts	Statement savings accounts
	\$m	\$m	\$m	\$m	\$m
<b>1995</b>					
August	580	270	1 594	550	189
September	599	263	1 673	549	192
October	605	258	1 690	547	189
November	620	270	1 672	546	190
December	628	279	1 659	546	191
<b>1996</b>					
January	646	272	1 646	546	190
February	665	265	1 639	544	174
March	690	271	1 657	550	160
April	689	270	1 693	547	160
May	674	262	1 697	541	158
June	659	260	1 707	541	158
July	687	253	1 737	540	161
August	692	249	1 758	543	163

Month	Deposits			
	Passbook/School savings accounts	Other	Total	Loans <sup>2</sup>
	\$m	\$m	\$m	\$m
<b>1995</b>				
August	194	130	3 507	4 276
September	191	131	3 596	4 304
October	189	132	3 609	4 298
November	185	129	3 612	4 349
December	177	127	3 607	4 374
<b>1996</b>				
January	175	127	3 601	4 372
February	171	127	3 585	4 422
March	171	128	3 626	4 450
April	168	130	3 657	4 471
May	164	127	3 623	4 511
June	161	128	3 615	4 529
July	156	127	3 660	4 532
August	153	127	3 685	4 541

<sup>1</sup> Details are the averages of weekly figures for each month. The figures are derived from returns submitted by banks authorised under the *Banking Act* together with similar returns voluntarily submitted by the State banks; they exclude the Reserve Bank.

<sup>2</sup> Excludes non-resident loans.

(Source: Reserve Bank of Australia.)

## 30

PRIVATE NEW CAPITAL EXPENDITURE BY TYPE OF ASSET<sup>1</sup>: Original

Year or quarter	New buildings and structures			Equipment, plant, and machinery		Total
	\$m		\$m	\$m	\$m	
1993-94	100		341		441	
1994-95	133		503		636	
1995-96	180		400		580	
<b>1995</b>						
June	41		170		211	
September	51		95		146	
December	47		92		139	
<b>1996</b>						
March	44		96		140	
June	37		117		154	

<sup>1</sup> Estimates based on a sample survey and therefore subject to sampling variability. Covers selected industries only—mining, manufacturing, finance, property and other selected industries.

(Source: State Estimates of Private New Capital Expenditure, ABS catalogue number 5646.0.)

## 31

PASSENGER ARRIVALS AND DEPARTURES, TASMANIA<sup>1</sup>: Original

Period	By air				Cruise ships		
	Interstate arrivals	International arrivals	By sea	Total	Total departures <sup>2</sup>	Arrivals	Departures
1992	652 092	4 428	114 969	771 489	761 109	4 608	4 608
1993	694 244	5 144	115 381	814 769	814 835	2 033	2 033
1994	745 508	4 166	128 644	878 318	880 936	6 592	6 592
1995	811 784	3 982	116 869	932 635	931 278	6 199	6 199
<b>1995</b>							
June	57 146	211	7 678	65 035	62 555	—	—
<b>1996</b>							
April	72 146	355	9 652	82 153	84 390	—	—
May	60 990	182	4 861	66 033	78 425	—	—
June	63 351	120	5 417	68 888	66 010	—	—

<sup>1</sup> The following persons are not included in these statistics: passengers under three years of age accompanied by an adult; passengers travelling on chartered flights with minor carriers; passengers travelling on private or VIP flights; and passengers from or departing for overseas other than direct flights to New Zealand.

<sup>2</sup> The proportion of departing passengers who were visitors was shown to be about 58% in the 1981 Tasmanian Visitor Survey, 55% in the 1984 Tasmanian Visitor Survey, 53% in the 1986 Tasmanian Visitor Survey, 65% in the 1990 Tasmanian Visitor Survey, 60% in the 1994 survey, and 58% in the 1995 Tasmanian Visitor Survey.

(Source: Department of Tourism)

## 32

## TOTAL PASSENGER ARRIVALS BY AIR AND SEA, TASMANIA: Original, seasonally adjusted and trend

Period	Original	Seasonally adjusted <sup>1</sup>	Trend
<b>1995</b>			
June	65 035	78 183	77 636
<b>1996</b>			
April	82 153	75 312	78 876
May	66 033	83 587	80 039
June	68 888	82 722	81 326

<sup>1</sup> There is an annual recalculation of seasonal adjustment factors to include the most recent year's arrivals. This occurs at the end of each financial year and may cause revisions to previously published seasonally adjusted and trend figures. A full time series of seasonally adjusted and trend series from January 1971 is available on request, telephone (002) 20 5870.

(Source: Department of Tourism. ABS unpublished data.)

HOTELS, MOTELS, ETC. WITH FACILITIES						
Period	Original		Room nights		Original	
	Establishments <sup>2</sup> no.	Guest rooms <sup>2</sup> no.	Seasonally adjusted <sup>1</sup> no.	Trend estimates <sup>1</sup> no.	Room occupancy rate %	Takings from accommodation \$'000
<b>June quarter</b>						
1994	177	5 322	n.a.	n.a.	51.2	17 799
1995	179	5 408			48.4	17 954
1996	180	5 523			46.7	17 815
<b>1994</b>						
April	n.a.	n.a.	92 505	88 723	61.1	6 948
May	n.a.	n.a.	92 211	89 629	52.8	6 451
June	177	5 322	84 624	90 071	39.5	4 399
<b>1995</b>						
April	n.a.	n.a.	84 545	87 811	55.6	7 028
May	n.a.	n.a.	85 913	88 469	48.0	6 056
June	179	5 408	90 857	89 209	41.6	4 870
<b>1996</b>						
April	n.a.	n.a.	86 789	86 889	56.2	7 353
May	n.a.	n.a.	83 759	85 719	45.7	5 766
June	180	5 523	85 705	84 912	38.2	4 696
HOLIDAY UNITS						
Period	Original		Unit nights		Original	
	Establishments <sup>2</sup> no.	Units <sup>2</sup> no.	Seasonally adjusted <sup>1</sup> no.	Trend estimates <sup>1</sup> no.	Unit occupancy rate %	Takings from accommodation \$'000
<b>June quarter</b>						
1994	52	793	n.a.	n.a.	49.8	2 455
1995	54	830			43.6	2 343
1996	55	846			43.3	2 374
<b>1994</b>						
April	n.a.	n.a.	14 516	13 481	62.3	1 046
May	n.a.	n.a.	13 977	13 501	47.8	786
June	52	793	12 407	13 439	39.3	623
<b>1995</b>						
April	n.a.	n.a.	13 749	12 543	55.9	1 050
May	n.a.	n.a.	11 809	12 428	38.7	685
June	54	830	11 956	12 252	36.2	608
<b>1996</b>						
April	n.a.	n.a.	14 486	12 565	57.6	1 090
May	n.a.	n.a.	11 651	12 426	37.4	674
June	55	846	11 829	12 296	35.2	611
CARAVAN PARKS						
Period	Original		Site nights		Original	
	Establishments <sup>2</sup> no.	Sites and cabins <sup>2</sup> no.	Seasonally adjusted <sup>1</sup> no.	Trend estimates <sup>1</sup> no.	Site occupancy rate %	Takings from accommodation \$'000
<b>June quarter</b>						
1994	70	6 708	n.a.	n.a.	28.1	1 435
1995	75	6 625			30.3	1 523
1996	73	6 479			30.5	1 575
<b>1994</b>						
April	n.a.	n.a.	64 127	61 190	32.9	648
May	n.a.	n.a.	61 494	62 200	26.3	428
June	70	6 708	60 791	63 185	25.2	359
<b>1995</b>						
April	n.a.	n.a.	67 308	65 390	35.0	700
May	n.a.	n.a.	65 379	65 540	28.4	438
June	75	6 625	65 727	65 523	27.7	385
<b>1996</b>						
April	n.a.	n.a.	63 649	65 913	33.9	712
May	n.a.	n.a.	63 992	65 960	29.4	467
June	73	6 479	68 240	66 035	28.3	395

<sup>1</sup> Seasonally adjusted and trend estimates are revised annually because of yearly seasonal re-analysis. (Source: Tourist Accommodation, ABS catalogue number 8635.6.)

<sup>2</sup> At end of quarter.

## 34 REGISTRATIONS OF NEW MOTOR VEHICLES<sup>1</sup>: Original

Year or month	Passenger vehicles	Other vehicles <sup>2</sup>	Total (excl. motor cycles)	Vehicles registered by vehicle rental businesses <sup>3</sup>	Motor cycles
	no.	no.	no.	no.	no.
1993	10 019	2 478	12 497	1 507	440
1994	10 543	2 837	13 380	1 708	376
1995	10 919	2 874	13 793	1 952	393
<b>1994</b>					
August	1089	242	1 331	264	33
<b>1995</b>					
August	1 061	208	1 269	245	28
September	1 076	184	1 260	373	36
October	1 072	208	1 280	301	35
November	702	151	853	62	32
December	1 489	245	1 734	842	37
<b>1996</b>					
January	670	203	873	5	36
February	777	212	989	62	48
March	764	197	961	3	33
April	659	159	818	—	30
May	916	286	1 202	3	44
June	744	250	994	9	32
July	1 099	242	1 341	232	26
August	1 040	296	1 336	216	52

<sup>1</sup> Includes State and Commonwealth Government-owned motor vehicles other than those belonging to the defence services. Excludes tractors, plant and equipment, caravans and trailers.

<sup>2</sup> Comprises utilities, panel vans, rigid and articulated trucks and other truck-type vehicles (i.e. motor vehicles designed for purposes other than freight carrying, e.g. campervans, tow trucks, ambulances and hearses) and buses.

<sup>3</sup> These figures are included in previous columns.

(Source: *Motor Vehicle Registrations Australia*, ABS catalogue number 9301.0. ABS unpublished data.)

## 35 TURNOVER OF RETAIL ESTABLISHMENTS AT CURRENT PRICES<sup>1</sup>: Original and trend

Period	Original \$m	Trend estimates	
		\$m	Change from corresponding month of previous year %
<b>1994</b>			
August	220.8	230.9	3.5
<b>1995</b>			
August	230.5	237.0	2.6
September	222.3	237.7	3.2
October	236.0	239.0	4.1
November	251.6	240.7	5.1
December	320.5	242.6	5.8
<b>1996</b>			
January	240.5	244.5	6.2
February	233.5	245.9	6.0
March	241.3	246.8	5.5
April	237.8	247.3	5.0
May	250.3	247.6	4.6
June	230.6	247.9	4.6
July	234.2	248.1	4.7
August	243.2	248.4	4.8

<sup>1</sup> Survey has been re-designed—see Information Paper (8511.0).

(Source: *Retail Trade, Australia*, ABS catalogue number 8501.0.)

	NSW	Vic.	Qld	SA	WA	Tas.	Aust. <sup>1</sup>
<b>Population</b>							
Estimated resident population, March 1996 ('000) p	6 173.0	4 533.3	3 339.0	1 477.7	1 755.5	<b>473.2</b>	18 238.6
Proportion of Australian population, March 1996 (%) p	33.8	24.9	<b>18.3</b>	8.1	9.6	<b>2.6</b>	100.0
Population growth rate, 12 months to March 1996 (%) p	1.3	0.9	2.6	0.4	1.9	<b>0.0</b>	1.4
<b>Labour Force</b>							
Employment growth, 12 months to September 1996 (trend series) (%)							
Males	0.8	1.7	2.6	- 0.8	0.6	<b>2.8</b>	1.2
Females	- 0.3	0.8	1.8	2.1	4.2	<b>- 2.8</b>	0.9
Persons	0.3	1.3	2.2	0.4	2.1	<b>0.4</b>	1.1
Unemployment rate (trend series), September 1996 (%)	8.0	9.0	9.5	9.5	7.7	<b>10.6</b>	8.7
Unemployment growth, 12 months to September 1996 (trend series) (%)	5.9	2.2	2.9	0.0	7.1	<b>13.9</b>	4.0
Participation rate (trend series), September 1996 (%)	62.2	63.5	64.9	<b>61.9</b>	66.6	<b>60.9</b>	63.6
Average weekly overtime worked per employee, August 1996 (hours)	1.1	1.0	1.0	1.0	1.2	<b>0.8</b>	1.0
Job vacancy rate, August 1996 (%)	1.1	0.8	0.8	1.1	1.1	<b>0.8</b>	1.0
Working days lost through industrial disputes, 12 months to July 1996 (days per '000 employees)	159	96	141	64	162	<b>39</b>	128
<b>Wages and Prices</b>							
Average weekly total earnings, full-time adult employees (trend series) May 1996 (\$)							
Males	814.8	765.7	700.8	726.3	810.5	<b>701.1</b>	773.1
Females	632.3	605.4	570.6	568.9	583.6	<b>580.3</b>	605.0
Persons	748.6	712.5	651.2	675.5	729.0	<b>659.5</b>	713.7
Average weekly total earnings, full-time adult employees, growth rate, 12 months to May 1996 (%)	4.4	4.4	1.4	3.7	5.2	<b>3.6</b>	3.9
Consumer price index, all groups, annual growth to September quarter 1996 (%) <sup>2</sup>	2.5	1.7	2.3	1.7	2.3	<b>2.3</b>	2.1
<b>Building</b>							
% change in the number of new residential dwelling units approved in 12 months ended August 1996, over the same period previous year	- 17.5	- 17.3	24.5	- 35.4	- 25.3	<b>- 20.1</b>	- 21.5
<b>Finance and Retail Trade</b>							
% change in private new capital expenditure, 12 months ended June 1996, over the same period previous year	8.1	14.9	9.8	- 15.3	12.6	<b>- 8.8</b>	10.2
% change in trend estimates turnover of retail establishments, August 1996 (change from corresponding month of the previous year)	7.8	3.9	4.9	1.9	2.8	<b>4.8</b>	5.2
<b>Transport</b>							
% change in number of new motor vehicles (excluding motorcycles) registered 12 months ended August 1996, over the same period previous year	- 3.7	2.0	1.7	0.5	1.5	<b>- 1.4</b>	- 0.4
<b>Agriculture</b>							
% change in the number of livestock slaughtered 12 months ended August 1996 over the same period previous year							
Cattle and calves	- 3.8	- 4.2	- 13.8	- 9.0	- 2.6	<b>- 12.2</b>	- 7.2
Sheep and lambs	- 11.8	- 11.3	11.7	- 16.1	2.1	<b>- 20.9</b>	- 10.0
<b>Tourism</b>							
Room occupancy rates for hotels, motels etc. with facilities, June quarter 1996 (%)	57.4	53.5	57.6	51.4	56.5	<b>46.7</b>	56.1
<b>Australian National and State Accounts</b>							
% change in GSP (GDP), Average 1989-90 Prices Trend Series							
Mar. qtr 1996 to June. qtr 1996	1.0	0.4	1.7	0.7	2.0	<b>0.1</b>	0.7
June. qtr 1995 to June. qtr 1996	3.5	3.9	5.2	4.7	8.3	<b>2.7</b>	4.2

<sup>1</sup> Australian totals include the ACT and NT.<sup>2</sup> CPI applies to State capitals.

## EXPLANATORY NOTES

### INTRODUCTION

**1** This publication contains latest figures for a comprehensive range of economic indicators. Statistics shown in this publication are the latest available at the date of preparation and may be subject to revision in subsequent issues. In a number of cases figures appearing in this publication are preliminary and are subject to revision in subsequent issues. Reference should therefore always be made to the latest issue or to the statistical publication on the specific subject.

### SEASONAL ADJUSTMENT AND TREND ESTIMATION

**2** Seasonal adjustment is a means of removing the estimated effects of normal seasonal variation from the series so that the effects of other influences on the series can be more clearly recognised. Seasonal adjustment does not aim to remove the irregular or non-seasonal influences which may be present in any particular month. This means that month-to-month movements of the seasonally adjusted estimates may not be reliable indicators of trend behaviour.

**3** The smoothing of seasonally adjusted series reduces the impact of the irregular components of the seasonally adjusted series and creates trend estimates. These trend estimates are derived by applying a 13-term Henderson-weighted moving average to all months except the last six. The last six monthly trend estimates are obtained by applying surrogates of the Henderson average to the seasonally adjusted series. Trend series are used to analyse the underlying behaviour of the series over time.

**4** While this smoothing technique enables estimates to be produced for the latest month, it does result in revisions to the most recent months as additional observations become available. Generally, subsequent revisions become smaller and after 3 months have a negligible impact on the series. Revisions also occur as a result of the annual review of seasonal factors.

**5** Users may wish to refer to the ABS Publication *A Guide to Interpreting Time Series – Monitoring 'Trends' – An Overview* (1348.0) for more detailed information on smoothing seasonally adjusted time series data.

### RELATED PUBLICATIONS

**6** Current publications produced by the ABS are listed in the *Catalogue of Publications and Products* (1101.0). The ABS also issues, on Tuesdays and Fridays, the *Release Advice* (1105.0) which lists publications to be released in the next few days. The *Catalogue* and *Release Advice* are available from any ABS office.

### UNPUBLISHED STATISTICS

**7** As well as the statistics included in this and related publications, the ABS may have other relevant unpublished data available. Inquiries should be made to Information Inquiries on (002) 20 5800 or to any ABS office.

### EFFECTS OF ROUNDING

**8** Some figures have been rounded and discrepancies may occur between totals and sums of the component items.

### SYMBOLS AND OTHER USAGES

n.a.	not available
n.y.a.	not yet available
..	not applicable
—	nil or rounded to zero
p	preliminary—figure or series subject to revision
r	figure or series revised since previous issue



## For more information . . .

The ABS publishes a wide range of statistics and other information on Australia's economic and social conditions. Details of what is available in various publications and other products can be found in the ABS Catalogue of Publications and Products available from all ABS Offices.

### ABS Products and Services

Many standard products are available from ABS bookshops located in each State and Territory. In addition to these products, information tailored to the needs of clients can be obtained on a wide range of media by contacting your nearest ABS Office. The ABS also provides a Subscription Service for standard products and some tailored information services.

### National Dial-a-Statistic Line

0055 86 400

*Steadycom P/L: premium rate 25c/21.4 secs.*

This number gives 24-hour access, 365 days a year, for a range of important economic statistics including the CPI.

### Internet

<http://www.statistics.gov.au>

A wide range of ABS information is available via the Internet, with basic statistics available for each State, Territory and Australia. We also have Key National Indicators, ABS product release details and other information of general interest.

## Sales and Inquiries

Keylink        STAT.INFO/ABS  
X.400         (C:Australia,PUB:Telememo,O:ABS,FN:STAT,SN:INFO)  
Internet       stat.info@abs.telememo.au

National Mail Order Service                (06) 252 5249  
Subscription Service                         1800 02 0608

#### Information Inquiries

#### Bookshop Sales

SYDNEY	(02) 9268 4611	(02) 9268 4620
MELBOURNE	(03) 9615 7755	(03) 9615 7755
BRISBANE	(07) 3222 6351	(07) 3222 6350
PERTH	(09) 360 5140	(09) 360 5307
ADELAIDE	(08) 8237 7100	(08) 8237 7582
CANBERRA	(06) 252 6627	(06) 207 0326
HOBART	(03) 6220 5800	(03) 6220 5800
DARWIN	(08) 8943 2111	(08) 8943 2111



Client Services, ABS, PO Box 10, Belconnen ACT 2616

Produced by the Australian Government Publishing Service  
© Commonwealth of Australia 1996

Recommended retail price: \$16.50



2130360011960

ISSN 1034-1803

ABS Catalogue No. 100/00  
Information Commercial Publications  
100/1000 1000